

My Heidekreis



**Tips for recreation in the
Adventure World Lüneburg Heath**
www.erlebnisswelt-lueneburger-heide.de/en



 **Heidekreis**
ERLEBNISWELT LÜNEBURGER HEIDE


**LÜNEBURGER
HEIDE**

ERLEBNISWELT HEIDEKREIS



Heading for the thrilling adventures of our time

Time is precious when you are on holiday, so you should use it for extraordinary experiences that guarantee the most wonderful holiday memories: Heidekreis offers you a wide range of miscellaneous worlds:

You are looking for entertainment, fun and thrill? Then Heidekreis is just the place for you! The close proximity to so many renowned theme parks is unique in Europe!

You are looking for peace and relaxation? Then Heidekreis is just the place for you! Soltau Thermal Baths, Aqua Mundo at Center Parcs Bispinger Heide and Südsee Camp offer you plenty of options to recharge your batteries.

You love to do sports? Then Heidekreis is just the place for you! High rope courses, golf courses and a ski hall leave every fitness fan breathless!

www.erlebnisswelt-lueneburger-heide.de/en/adventure/attractions



Contents

Walderlebnis Ehrhorn	4
High Rope Course	
HöhenwegArena	4
Center Parcs Bispinger Heide	5
SNOW DOME Bispingen	5
DAS VERRÜCKTE HAUS (The crooked house)	6
Adventure Labyrinth	6
Ralf Schumacher Kartcenter	7
Heide-Kastell Iserhatsche	7
Bird of Prey Enclosure Bispingen	8
Quad Bike Track Bispingen	8
Heide Park Resort	9
Designer Outlet Soltau	10
felto – World of Felt in Soltau	11
Toy Museum Soltau	11
Golfpark Soltau	12
Heidewitzka –	
Children's Playworld	12
Chilli Manufaktur	13
Soltau Thermal Baths	13
Allwetterbad Munster	14
Südsee-Camp Wietzendorf	14
German Tank Museum Munster	15
Buhl Activity-Park	15
Weltvogelpark Walsrode	16
Golf Club Tietlingen e.V.	17
FloraFarm Ginseng	17
Serengeti Park	18
Backtheater	19
Heide-Wachs Zierkerzenschnitzerei	19

IMPRINT

Publisher:
Erlebnisswelt Lüneburger Heide GmbH
Am Alten Stadtgraben 3 | 29614 Soltau
info@erlebnisswelt-lueneburger-heide.de
www.erlebnisswelt-lueneburger-heide.de

Design & Production:
Venus.Werbeagentur GmbH |
94327 Bogen

Cartography:
Frank Brockmann | Soltau

Picture Credits:
Leisure companies and tourist
information centres of Erlebnisswelt
Lüneburger Heide GmbH. We would
like to thank all service providers for
supplying the graphic materials.

All rights reserved.
The brochure is for sales promotion
and information purposes only.
Reprinting, also in extracts, only with
the publisher's explicit permission.
Changes and errors excepted.

As at April 2019 | 5,000 copies

Schneverdingen**Walderlebnis
Ehrhorn**

The forest education centre is located in the middle of the Nature Reserve Lüneburg Heath. Surrounded by woodlands it offers various opportunities to explore, research and discover a unique landscape.

**Guided forest
experience tour:**

Thursday 11 am to 1 pm
Price per person € 5.00



Ehrhorn 1 | 29640 Schneverdingen | Tel. +49 (0) 5198 987120
www.ehrhorn-heide.de

Schneverdingen**High Rope Course
HöhenwegArena**

Get out and about and experience a little thrill, train your strength, skill, coordination and agility.

Unwind, clear your mind and spend an adventurous day, whether on your own or together with family and friends. With over 150 climbing stations on 6 levels and several zip lines, we are Europe's biggest pole-based climbing park of this kind. Climbing tasks of different levels pose a worthy challenge for every guest and naturally offer great climbing fun.



Camp Reinsehlen 20 | 29640 Schneverdingen | Tel. +49 (0) 5198 987373
www.hoehenwegarena.de

Bispingen**Center Parcs
Bispinger Heide**

Due to its numerous facilities the holiday park Bispinger Heide is the perfect place for a holiday or a day stay. The whole family can discover the incredible and manifold water world at the Aqua Mundo, can immerse in our tropical water jungle and can try to brave our white water ride. Or how about just unwinding in the Beauty & Wellness Center Nature & Spa? Enjoy the Mediterranean holiday world at the Market Dome, live entertainment and the children's indoor play area BALUBA. And the big ones can experience some thrill at the Adventure Spots activities.



Töpinger Straße 69 | 29646 Bispingen | Tel. +49 (0) 5194 940
Fax +49 (0) 5194 941720 | www.tagesausflugcenterparcs.de/bs

Bispingen**SNOW DOME-
Bispingen**

Throughout the year the adventure world of the **SNOW DOME** Bispingen and the *****S RESORT HOTEL** Bispingen offer entertainment for the whole family. Whether sledding, skiing, snowboarding, romping around the **SNOWY LAND** or relaxing over a good meal at our Hofbräu restaurant – big and small holiday-makers will get their kick out of it.

You don't feel confident on skis? The in-house sports school certified by the German Association of Skiing Instructors (DSL) offers permanent skiing and snowboarding courses for beginners and advanced learners.



Hostfeldweg 9 | 29646 Bispingen | Tel. +49 (0) 5194 43110
Fax +49 (0) 5194 4311 111 | info@snow-dome.de | www.snow-dome.de

Bispingen

DAS VERRÜCKTE HAUS (The crooked house)

Everything is topsy-turvy! A complete detached house is turned by 180°, the entire furniture such as e.g. chairs, tables, toilets, lamps and cupboards hangs upside-down from the 'ceiling'. Visitors can have a look at this fantastic experience on over 120 m² and two floors. Great fun for all ages. The additional thrill: The house is inclined length- and crosswise by 6°. An extra challenge for your sense of balance! Since last year the worldwide first model railway running upside-down can be seen in the children's room. **Perfect selfie location!**



Horstfeld 1 | 29646 Bispingen | Tel. +49 (0) 160 92192676
info@dasverruecktehaus-bispingen.de | www.dasverruecktehaus-bispingen.de

Bispingen

Adventure Labyrinth

The labyrinth or – strictly speaking – the maze covers 2800 m² and is constructed of a wooden connection system that can be rearranged at any time. By solving puzzles you become familiar with the Lüneburg Heath in a playful manner. This game system was designed in co-operation with the association Verein Naturschutzpark Lüneburger Heide. The action-packed adventure points can be by-passed so that the maze is barrier-free and also accessible for people on wheels. And if you just want a general overview, you can head for the nearly 9.50 m high viewing tower in the centre of the Adventure Labyrinth.



Horstfeldweg / Gaußscher Bogen 4 | 29646 Bispingen
info@abenteuerlabyrinth.de | www.abenteuerlabyrinth.de

Bispingen

Ralf Schumacher Kartcenter

The Sports-and-Business Center of the former F1 and DTM pilot Ralf Schumacher offers one of the most modern and most beautiful in- and outdoor kart tracks in Europe. Apart from racing action for all ages, the restaurant and business area with four variable conference rooms and up to 250 places provides the perfect location for meetings, corporate events, family gatherings, a tasty dinner or just a coffee break.

A 6-lane bowling centre with catering offers an alternative for non-kart drivers.

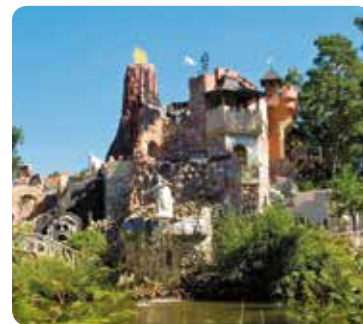


Horstfeld 5 | 29646 Bispingen | Tel. +49 (0) 5194 982050
Fax +49 (0) 5194 9820520 | info@rs-kartcenter.de | www.rs-kartcenter.de

Bispingen

Heide-Kastell Iserhatsche

The Heath Castle in a landscaped park full of oddities and unique collector's passion! The hunting lodge was constructed in Swedish timber style for the royal Prussian commercial counsellor Ernst Nölle from 1913 to 1914. From 1929 to 1986 the entire area was owned by Reemtsma. Nowadays the present owners give access to the following premises: 'hall-staircase', 'fireplace-and-trophy room', 'hall of mirrors', 'Diana-Sanssouci room' and 'four-seasons oak hall'.



Nöllestraße 40 | 29646 Bispingen | Tel. +49 (0) 5194 1206
Fax +49 (0) 5194 4179735 | www.iserhatsche.de

Bispingen**Bird of Prey
Enclosure
Bispingen**

Birds of prey and owls can be experienced at close range on a guided tour through the birds of prey enclosure of Ms. Steinmann-Laage. The animals in the enclosure live in almost open nature in the middle of the Raubkammerheide forests. Ms. Steinmann-Laage presents her 'lodgers' during the guided tours with a special charm due to the personal relationship between the falconer and her birds.



An der Bundesstraße 209 | 29646 Bispingen | Tel. +49 (0) 5194 7888
www.greifvogel-gehege.de

Bispingen**Quad Bike Track
Bispingen**

Fun for all ages: On our over 300 m long dirt track you can have fun and really step on the gas, no matter whether beginner or master. The track guarantees a challenging ride along slight curves and across gentle hills. Children aged 8 and above are allowed to drive on their own. Younger children can go with an adult on a bigger quad bike. For this purpose there is a crossbar fixed to the bike that is not only meant to hold on to but also for steering – something that even the very young enjoy.



Uhlenstieg 13a | 29646 Bispingen | Tel. +49 (0) 171 3151958
www.quadbahn-bispingen.de

**Soltau****Heide Park Resort**

Heide Park Resort is the largest theme park and short trip adventure. Experience more than 30 attractions especially for children under 6 and get the ultimate adrenaline rush on the big roller coasters 'Flight of the Demons' and 'Kraken'. Children immerse themselves in the unique theme world around DreamWorks 'How to Train Your Dragon': they meet Toothless and become real junior dragon trainers. Courageous ghost busters aged 6 and above experience an interactive indoor adventure of the 5th dimension in 'Ghostbusters 5D – the ultimate Ghost Hunt'.

Too much adventure for one day? Stay the night! Discover that the Heide Park Adventure Hotel is much more than just a hotel and be wowed by the interactive theme rooms. Or experience our holiday oasis at the Holiday Camp and benefit from the all-inclusive package.

Tel. 01806 919101

(€ 0.20 on the landline,
max. € 0.60 by mobile phone/per call)



Heide Park 1 | 29614 Soltau | Fax +49 (0) 1805 545801
info@heide-park.de | www.heide-park.de



Soltau

Designer Outlet Soltau

The Designer Outlet Soltau is a unique shopping village on 13,500 m². Little Heath houses – half-timbered houses with thatched roofs – are one of the highlights that lend the Designer Outlet Soltau its own special charm.

In this pleasant atmosphere over 80 design brands invite you to go shopping in the open air and offer discounts of 30-70 %. Renowned international design and fashion labels as well as high class brands for sports & outdoor, shoes & leather, home & living, accessories and children's clothing make the shopper's heart beat faster.

Open:

Monday to Saturday from 10 am to 8 pm



Rahrsberg 7 | 29614 Soltau | Tel. +49 (0) 5191 60280
info@designeroutletsoltau.com | www.designeroutletsoltau.com

Soltau

felto - World of Felt in Soltau

This unique new attraction displays the fascination of a special material on 1,500 m². Discover the blaze of colour inside old factory walls, the inventive use of an ancient material, technical sophistication and creative activities. Felt is a fabric for adventurers and technicians, artists and children. The innovative educational and interactive centre about this multi-purpose material combines a felt exhibition, felt stories, felt games, felt experiments, felting techniques, felt art, felting workshop, felt market,...

Moreover there is a bistro and a viewing tower with a panorama of the factory and town.

Marktstraße 19 | 29614 Soltau | Tel. +49 (0) 5191 9754943
info@filzwelt-soltau.de | www.filzwelt-soltau.de



Soltau

Toy Museum Soltau

The new annex with the 'Flying Classroom' in lofty heights makes all the museum levels fully accessible. On about 900 m² one of the best and manifold toy collections in the world offers lots of things for everybody to marvel at, to admire, to laugh about, to remember and to try out. Here you are not only allowed to look but also to play. Grandpas and their grandchildren compete in building, children venture a performance as a clown and the whole family put their skills and luck to the test in board games or let their imagination run wild at the light table.



Poststraße 7 | 29614 Soltau | Tel. +49 (0) 5191 82182
info@spielmuseum-soltau.de | www.spielmuseum-soltau.de

Soltau

Golf Park Soltau

Golfers are delighted by the 27-hole golf resort with the well-kept golf course and the ample training facilities. Playing golf is good for your health and makes you happy – learn to play golf at our golf school now. On the slightly hilly area there are quite a number of water hazards and brooks that round off the nature experience at the Golf Resort Hof Loh – one of the most scenic ones in Northern Germany. Most of the fairways are spaciouly laid out and forgive a lot. On the other hand the greens are rather small, often elevated and defended by bunkers. They require precise playing.



Hof Loh | 29614 Soltau | Tel. +49 (0) 5191 9676333 | Fax +49 (0) 5191 9676334
info@golf-soltau.de | www.golf-soltau.de

Soltau

Heidewitzka - Children's Playworld

Romp until the cow comes home! Located in the former Tennis and Squash Center Soltau. On the new Soccer Court players of all ages can burn off energy! Heidewitzka makes every visitor sweat whether you bounce in unfamiliar heights on six trampolines, have a race on the kart track, scramble on the climbing volcano or stage a little table football tournament. Heidewitzka's centrepiece is the 7-metre-tall Play-and-Climb Park that is constructed like a multi-storey maze.



Gottfried-von-Cramm-Straße 1 | 29614 Soltau | Tel. +49 (0) 5191 13056
www.heidewitzka.com

Soltau

Chilli Manufaktur

Think of chili and you automatically associate warm southern countries and hardly the cool north of Germany. But chili grows here, too! Visit the only chili farm in the Lüneburg Heath and marvel at the abundance of flavour in our farm shop.



If you fancy more, register now for a chili tasting with your friends.

Chili Tasting:

July to September, Friday 2 p.m.
Price per Person € 14.00
Upon prior reservation only!



Dannhorn 5a | 29614 Soltau | Tel. +49 (0) 5191 18223
info@die-chili-manufaktur.de | www.die-chili-manufaktur.de

Soltau

Soltau Thermal Baths

Compose your very own mixture for a short break at Soltau Thermal Baths!

Just unwind and leave the daily routine behind you – the experience in the heart of the Lüneburg Heath leaves nothing to be desired.



Mühlenweg 17 | 29614 Soltau | Tel. +49 (0) 5191 84481 | Fax +49 (0) 5191 84499
info@soltau-therme.de | www.soltau-therme.de

Munster

Allwetterbad Munster

Adventure Pool, a new 40 m water slide, serious swimmers can swim laps in the swimming pool.

The Baby Paddling Pool has got a children's slide. Aqua Jogging, Baby Paddling Pool, Cafeteria/Kiosk, sunbathing area, learning pool, massage jets, adventure pool, warm water days, water games afternoon.



Dr. Herrmann-Marcks-Straße 14 | 29633 Munster | Tel. +49 (0) 5192 982370
www.ihr-stadtwerk.de

Wietzendorf

Südsee-Camp Wietzendorf

Dive into the waves of the sub-tropical bathing paradise or the lake, play a round of jungle golf, go climbing at our high rope course or visit our riding stable: you will find quite a lot to discover here for the whole family. Afterwards you can have refreshments at one of our restaurants or enjoy an ice-cream while overlooking the lake! Day trippers are very welcome and if you like it here, wonderful pitches, comfortable rentals such as Swedish holiday houses and a varied activity programme for all ages invite you to stay.



Südsee-Camp 1 | 29649 Wietzendorf | Tel. +49 (0) 196 980116
Fax +49 (0) 5196 980299 | info@suedsee-camp.de | www.suedsee-camp.de

Munster

German Tank Museum

The German Tank Museum Munster displays 150 items of heavy equipment from 1917 to the present. In addition there are many other exhibits such as uniforms, medals, arms...



Outdoors the accessible tank Leopard 1 conveys the genuine feeling of constriction inside the tank and the importance of teamwork. The museum does not only want to inform but also encourages raising questions and having a critical look at German history – particularly military history.



Hans-Krüger-Straße 33 | 29633 Munster | Tel. +49 (0) 5192 2552
info@daspanzermuseum.de | www.deutsches-panzermuseum.de

Bomlitz

Buhl Activity-Park

With 6 climbing courses Buhl-Activity Climbing Forest Walsrode offers climbing adventure for the whole family. After a short instruction course, the climbing courses can be done independently and in random order. The different levels of difficulty and height guarantee the right course for everyone – you decide and can carefully approach your own limits. Of course our trained staff will support you.



Am Vogelpark 2b | 29699 Bomlitz | Tel. +49 (0) 5161 7889611
www.kletterwald-walsrode.de



Walsrode

Weltvogelpark Walsrode

This adventure will give you wings! You will come across 4,000 birds from 650 species and all continents and will have the opportunity to take part in many of the attractions at the Weltvogelpark Walsrode (World's Bird Park). The park belongs to the worldwide 10 zoos with the largest amount of different species and is considered as the biggest Bird Park in the world. The Weltvogelpark Walsrode with its 24 ha area is one of the largest and most beautiful parklands in Northern Germany. The breathtaking gardens change with the months and seasons and always provide new reasons to be amazed and enchanted.

Twice a day the spectacular flight shows take the visitors on a journey round the world. The visitors go salmon fishing with the bald eagle 'Lady' in North America, experience the thermal of the South American Andes with the Andean Condor 'Carlos' and go snake hunting in the African savannahs with the secretary bird 'Boots'. Get close to many exotic birds in Toowoomba, the paradise hall and in the 3,000 m² free flight hall or during the exciting hands-on feedings of the penguins, pelicans and others. This is where visitors experience fascinating birds face-to-face.



Am Vogelpark | 29664 Walsrode | Tel. +49 (0) 5161 60440
Fax +49 (0) 5161 604440 | info@weltvogelpark.de | www.weltvogelpark.de

Tietlingen

Golf Club Tietlingen e.V.

One of the most beautiful golf courses in Northern Germany welcomes you in Tietlingen. Slightly hilly and with water hazards that naturally fit into the scenery. The individual courses are not excessively long but are very demanding when it comes to precision and play tactics. Here every golfer must find the right strategy – no matter what handicap they have. The park-like golf course was laid out on the soft and springy heath soil in Tietlingen that makes it incredibly easy to march down the fairways.



Tietlingen 6c | 29683 Bad Fallingb. | Tel. +49 (0) 5162 3889
Fax +49 (0) 5162 7564 | info@tietlingen.de | www.tietlingen.de

Walsrode

FloraFarm Ginseng

The only ginseng gardens in Europe at FloraFarm are open to the public from May to September. Many visitors have already learned about the effect and quality of ginseng 'made in Germany' during an expert guided tour. An excellent opportunity to experience the characteristic taste of the ginseng root!

For those who want to explore the world of ginseng on their own it is best to follow the Ginseng Path that runs from the farm to the ginseng gardens.



FloraFarm Ginseng.
And how are you?

Bockhorn 1 | 29664 Walsrode | Tel. +49 (0) 5162 1393 | Fax +49 (0) 5162 2939
Mobil +49 (0) 800 04467364 | info@florafarm.de | www.florafarm.de



Hodenhagen

Serengeti Park

Safari Adventure on more than 220 hectares! You will encounter 1,500 wild and exotic animals – some of them at close range. And you can have plenty of fun at more than 40 fun rides and breathtaking shows.

Lions, tigers, rhinos, giraffes, zebras, cheetahs, elephants and many more live in the Serengeti Safari. Some primates like the ring-tailed lemurs and the ruffed lemurs can even be stroked in the Jungle Safari.

The particular highlights of the Adventure Safari are the original Florida Airboats of the Aqua Safari, the versatile jet boats of the Black Mamba and the racy Quad Safari.



Am Safaripark 1 | 29693 Hodenhagen | Tel. +49 (0) 5164 97990
Fax +49 (0) 5164 9799177 | info@serengeti-park.de | www.serengeti-park.de

Walsrode

Backtheater

Discover a somewhat different kind of entertainment at the Backtheater (literally Baking Theatre). Comedies and much more in the middle of the bakery – throughout the year.

'The Lessee of the Camp Site' and 'The Reluctant Pretzel Wedding' are just two of the meanwhile seven theatre plays that are performed by the staff – whether baker or saleswoman.



Honerdingen 107 | 29664 Walsrode | Tel. +49 (0) 5161 984848
info@heidebackhaus.de | www.heidebackhaus.de

Walsrode

Heide-Wachs Zierkerzenschnitzerei

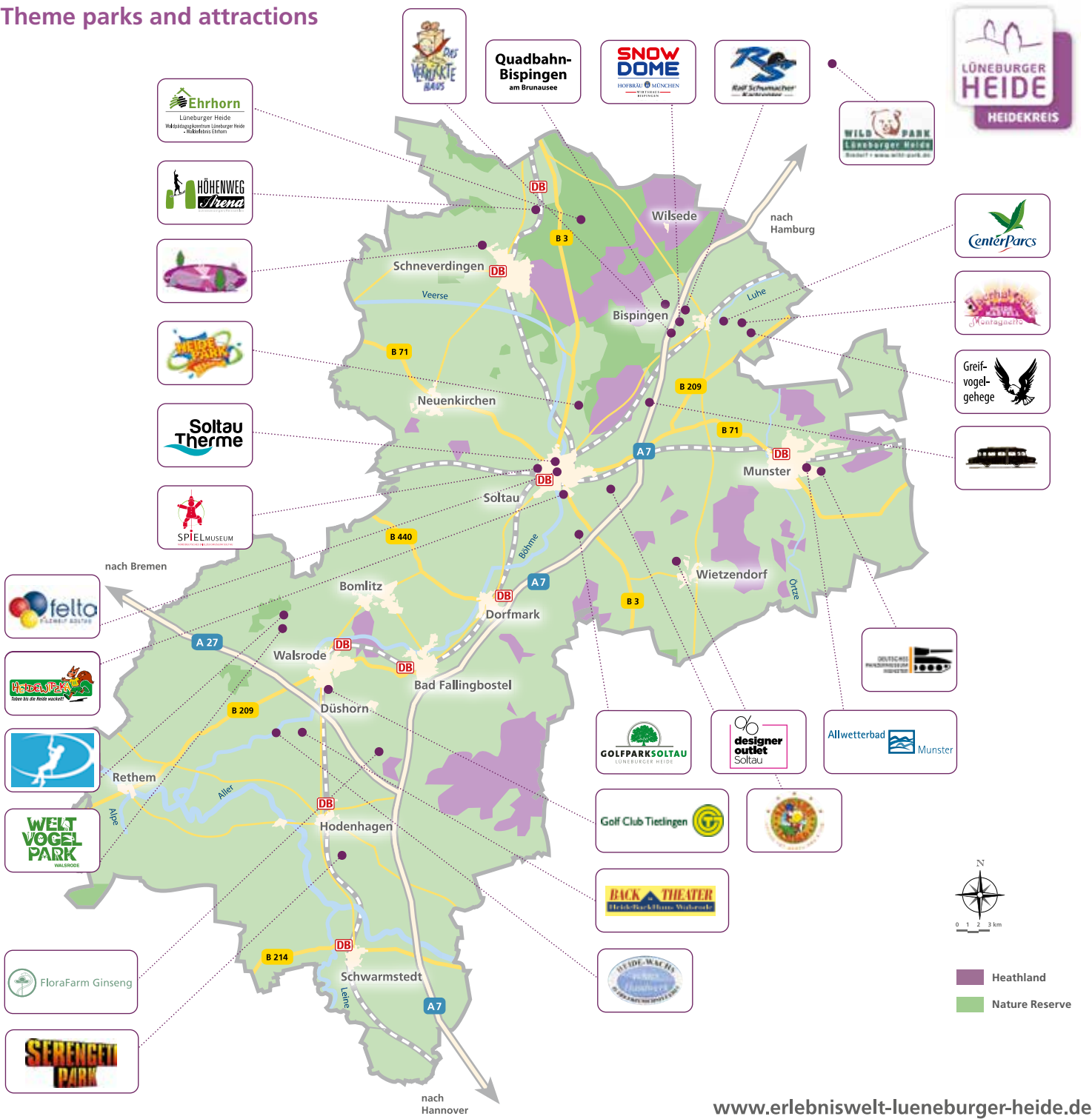
(Heath-Wax Carver's Workshop for decorative candles)

Candles have always had a special significance for people. They are not just a source of light but also create a harmonious atmosphere. Our candles are still carved according to old traditional craft. See the development of the candles on a little round tour and watch the carvers at work. In our large showroom you will find uniquely carved candles and over 300 different candles of any kind at manufacturer price.



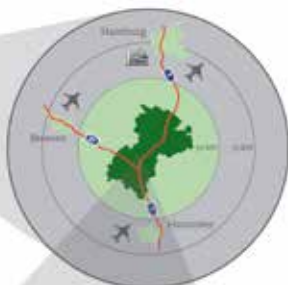
Ebbinger Straße 1a | 29664 Walsrode | Tel. +49 (0) 5161 910660
heide-wachs@t-online.de | www.zierkerze.de

Theme parks and attractions



Heidekreis

Mitten in Niedersachsen – mitten im Leben



Am Alten Stadtgraben 3 | 29614 Soltau
Tel. +49 (0) 5191 6233314 | Fax +49 (0) 5191 6233315
info@erlebnisswelt-lueneburger-heide.de
www.erlebnisswelt-lueneburger-heide.de



ERLEBNISWELT HEIDEKREIS