

My Heidekreis



Museums, Churches & Landscape Parks

www.erlebnisswelt-lueneburger-heide.de/en/culture





Adventure Days

In the Adventure World Lüneburg Heath 'sights' actually turn out to be worth seeing. But just seeing them is not enough: The museums, churches, abbeys and landscape parks invite you to enjoy days full of new impressions and experiences, pure joy and quiet indulgence. Picture-book holidays...

Contents

MUSEUMS

„De Theeshof“, Schneverdingen	6
Walderlebnis Ehrhorn, Schneverdingen	6
Desk-and-Quill Museum Insel, Schneverdingen	7
Heath Museum ‚Dat ole Hus‘, Wilsede	7
Heide-Kastell Iserhatsche, Bispingen	8
Schröers-Hof, Neuenkirchen	8
German Tank Museum, Munster	9
Toy Museum, Soltau	10
Felto – World of Felt, Soltau	11
Soltau Salt Museum, Soltau	12
Museum, Soltau	12
Peetshof, Wietzendorf	13

Archaeological Museum, Bad Fallingbostel	13
Heath Museum Rischmannshof, Walsrode ...	14
School Museum 'Old Village School' Bothmer, Schwarmstedt	14
Harry's Sounding Museum, Schwarmstedt	15

CHURCHES & ABBEYS

One-World Church, Schneverdingen	18
Peter-and-Paul-Church, Schneverdingen	19
St Bartholomäus Church, Neuenkirchen	19
Ole Kerk (Old Church), Bispingen	20
St Johannis Church, Soltau ..	21
Church of the Holy Ghost Wolterdingen, Soltau	21
Luther Church, Soltau	22

St Jakobi, Wietzendorf	22
St Urbani Church, Munster...	23
Sheep Pen Church St Martin, Munster	23
The Chapel in Wense	24
St Martin's Church, Dorfmark	25
Stellichte Church, Walsrode	25
Walsrode Abbey	26
St George Church in Meinerdingen, Walsrode	27
Church Kirchwahlingen, Rethem	27

LANDSCAPE PARKS

Heather Garden, Schneverdingen	30
AONB Höpen, Schneverdingen	31
Halifax, Soltau	31
Breidings Garden, Soltau	32
Eckernworth, Walsrode	33
Villa Klee – Hill Garden, Ahlden	33
Londy-Park, Rethem	34

IMPRESSUM

Publisher:

Erlebniswelt Lüneburger Heide GmbH
Am Alten Stadtgraben 3 | 29614 Soltau
info@erlebniswelt-lueneburger-heide.de
www.erlebniswelt-lueneburger-heide.de

Design & Production:

Venus.Werbeagentur GmbH | 94327 Bogen

Cartography:

green solutions GmbH | 82418 Murnau

Picture Credits: Leisure companies and tourist information centres of Erlebniswelt Lüneburger Heide GmbH. We would like to thank all service providers for supplying the graphic materials.

All rights reserved.

The brochure is for sales promotion and information purposes only. Reprinting, also in extracts, only with the publisher's explicit permission. Changes and errors excepted.

As at June 2018 | 3,000 copies



Museums in the Adventure World

Houses full of dreams and treasures and places full of mysticism. Memorials full of stories and rooms filled to the brim with striking insights into times long ago: the culture of remembrance plays a significant role in the Heidekreis.

From the Neolithic Age up to the present: In the Heidekreis life styles and lifeworlds of many generations come alive. No matter if you learn something about tank technology or about children's toys; it gives you a better understanding of the past centuries. You can also experience true collector's passion here. Just enter the world of museums in the Heidekreis and you will enter a kaleidoscope full of impressions!

For further information, see
www.erlebnisswelt-lueneburger-heide.de/en/museums



Local Museum 'De Theeshof'

The local museum 'De Theeshof' is situated on a magnificent farmstead in the northern part of Schneverdingen.

Next to the main building, a typical Lower Saxony Zweiständerhaus (two-post farm-house), you will find more original outbuildings on the museum premises. Stroll through the houses. Take your time to look at the various exhibitions about the rural life and work from 1850 to 1950. A permanent exhibition in the Frido-Witte-Haus is dedicated to the painter and graphic designer who was born in Schneverdingen.

The premises are maintained and looked after by the members of the Heimatbund Schneverdingen e.V. At numerous events many busy hands fill the farm and the old equipment with life.



Langelohsberg 13 | 29640 Schneverdingen
Phone: +49 5193 9901
www.heimatbund-schneverdingen.de



Walderlebnis Ehrhorn

The forest education centre is located in the middle of the Nature Reserve Lüneburg Heath. Surrounded by woodlands it offers various opportunities to explore, research and discover a unique landscape.

Here you can really experience the forest! At the forest education centre Lüneburg Heath you can go on a discovery tour. Trees, bushes, shrubs, mosses, fir cones and leaves. Walk through the surrounding forest and learn something about this important habitat. Follow the forest adventure trail or the blind path and admire the beautiful arboretum.



Ehrhorn 1 | 29640 Schneverdingen
Phone: +49 5198 987120
www.ehrhorn-heide.de



Desk-and-Quill Museum Insel

Step back in time in a historic classroom and discover what school was like in former times.

In carefully arranged rooms, the Desk-and-Quill Museum in the village Insel displays a wide range of exhibits. Old satchels, workpieces from manual training and needlework lessons, globes, school reports, exercise books, slates and other relicts in the cabinets, showcases and on the shelves remind you of the past.

The old classroom is certainly the highlight of the museum. Historical school lessons for groups and school classes can be booked.

One room is dedicated to the life of the popular poet Marie Kupfer, who was the daughter of the then teacher Friedrich Wilhelm Menke.



Reinsehler Weg 2 | 29640 Schneverdingen
Phone: +49 5193 6969



Heath Museum 'Dat ole Hus' (The old house)

The Heath Museum in Wilsede is one of the oldest farmhouses in the Nature Reserve Lüneburger Heide and conveys a really close experience of how the Heath farmers lived and worked around the year 1850.

Here you will find out why we 'step it up a notch' and why drudgery is called 'Plackerei' in German. In every corner of the 'Zweiständerhaus' you can feel what life and work in the Heath was like 150 years ago.

Extensive and fascinating special exhibitions are displayed at the Sheep Pen.



Wilsede | 29646 Bispingen
Phone: +49 4175 802933



Heide-Kastell Iserhatsche

The Heath Castle ISERHATSCHÉ attracts thousands of visitors every year. Marvel at the fascinating hunting lodge, the baroque garden with the Prussian Pavilion, the landscape park and the spectacular castle hill.



ISERHATSCHÉ: Uwe Schulz-Ebschbach's Heath Castle in Bispingen is an extraordinary synthesis of the arts and attracts thousands of visitors every year. The centre piece includes the hunting lodge, the Montagnetto, the baroque garden and the landscape park.

This ensemble is enhanced by the Prussian Pavilion and the Heath-Forest-House Cafe where – upon prior notice - groups can leisurely enjoy coffee, cake and ice-cream surrounded by panoramic landscape pictures.

Nöllestraße 40 | 29646 Bispingen
Phone: +49 5194 1206 | Fax: +49 5194 4179735
www.iserhatsche.de



Schröers-Hof

“Schröer comes from Schröder” – If you want to visit the Schröers-Hof, turn off the main street into Kirchstraße.

The facilities on the premises of the former dairy include the Vierständerhaus (four-post house), the Zweiständerhaus (two-post house) with an original farm garden, an old but still working forge, a bake house fired with birch wood where bread and butter cake is baked at events, a cart shed, a Kneipp basin and a pond as a biotope.

Text and picture panels in the hall of the Zweiständerhaus inform about the history of the building, how it was moved and reconstructed on the premises of the former dairy cooperative Neuenkirchen.



Kirchstraße 9 | 29643 Neuenkirchen
Phone: +49 5195 94026
info@heideurlaub24.de



German Tank Museum

technology | culture | society
This is the motto of the tank museum.

The Tank Museum in Munster has dedicated itself to the culture of remembrance. With the slogan “HiStory made from steel” it does not only display 150 tanks and vehicles from the past 100 years but also puts the objects into a socio-historical and historico-cultural context and interpretes them critically.

German military history from the 20th century up to the present is shown on 10,000 m² exhibition space. Over 150 different tanks, guns and vehicles from the last 95 years are on display. Medals, uniforms, military salute and a characteristic language: armies are a cultural space with its own symbols and rituals. Officers and politicians, workers and farmers: societies determine how their armies are composed.

There is a cafeteria at the museum offering beverages and snacks. The museum shop does not only offer souvenirs but also a wide range of books on the subject. Last admission at 5 p.m.

Hans-Krüger-Straße 33 | 29633 Munster
Phone: +49 5192 2552
info@daspanzermuseum.de | www.deutsches-panzermuseum.de





Soltau



Toy Museum Soltau

The Toy Museum Soltau is a house full of dreams and motion, treasures, history and stories only waiting to be explored.

At two locations and on 900 m² the museum houses one of the best and manifold toy collections in the world. Discover a mine in a walnut, a monkey riding on a frog, a doll foretelling the future and many other children's dreams! You can see colourful markets, oriental towns, exotic zoos or even biblical stories in shaker boxes. Shops, kitchens and parlours give you an idea of parent's wishes and children's dreams.

Artists perform crazy tricks in a colourful circus world. Means of transport from an elegant carriage to the aerodynamic rail zeppelin reflect technical innovation.

The toys and their stories merge to a walk-in historico-cultural picture book where the visitor has access to the environment and way of thinking of the past 400 years. And the best of all is that you are not only allowed to look at but also to listen, feel, try out and play – a unique experience for the whole family



Soltau



felto - World of Felt in Soltau

On the ground floor and three upper storeys the Felto presents the many facets of the fascinating material felt and its manufacturing. The variety ranges from a children's ball to art objects, from a nomad tent to a high tech emission filter. Felt is a versatile material and a natural product that not only has a rich cultural tradition worldwide but is also variously usable in industry and engineering.

By playing and experimenting at different stops, visitors learn a lot about felt as a material that has been used by many cultures for many centuries. Felt insulates and muffles; felt protects you from the cold and the heat; water drips off from wool felt while steam is absorbed.

Visitors can take the glass lift to the viewing platform and enjoy the spectacular view of Soltau.

In 1851 an operation department of the local company Carl Breiding & Sohn started to manufacture wool felt products in Soltau. The business premises are still situated in the town centre of Soltau. The Felto is housed in one of the former warehouses of the felt factory.

Poststraße 7 | 29614 Soltau
Phone: +49 5191 82182
info@spielmuseum-soltau.de | www.spielmuseum-soltau.de



Marktstraße 19 | 29614 Soltau
Phone: +49 5191 9754943
info@filzwelt-soltau.de | www.filzwelt-soltau.de



Soltau Salt Museum

Soltau carries salt in its name; so discover the history of salt - the white gold – at Soltau's Salt Museum.

You will learn about the town's peculiarities that have come from Soltau's salt stock and the Soltau brine since people began to settle here. Experience the tragic history of Soltau's potash plant. We display salt as means of payment, preserving agent and basic substance for industry. The museum is located in one of the oldest houses in the town.

Take a look into the larder of 1726 and you will understand how important salt was in times without refrigeration. The outside section of the museum is situated on the premises opposite the museum in Bahnhofstraße 17. There you will find the little well house built above the historic brine spring, a boiling hut and a graduation tower.

Guided tours for groups of 25 and more.



Bahnhofstraße 6 + 17 | 29614 Soltau
Phone: +49 5191 18045
info@salzmuseum-soltau.de | www.salzmuseum-soltau.de



Museum Soltau

The museum in the town centre opposite the town hall and the toy museum is operated by the heritage association Heimatbund Soltau e.V.

The museum displays exhibits from the town history and the local trades.

Don't miss the exhibition on the first floor featuring works of art produced by prisoners of war in the large camp in Soltau during World War I. The City of Soltau and the heritage association host special exhibitions on the ground floor of the main building from 1830 which originally served as a residential and commercial building for pastors and superintendents. It was renovated in 1988 and 2002 in order to house the museum



Poststraße 11 | 29614 Soltau
Phone: +49 5191 4376
heimatbund-soltau@ewetel.net | www.soltau-touristik.de



Peetshof in Wietzendorf

Peetshof in Wietzendorf is a typical half-timbered Heath farm from the 19th century.

Such an impressive witness of rural culture from the past centuries is rarely found in a complete state and at its original place.

In 1987 the municipality of Wietzendorf bought the farmstead to house a museum as well as cultural and sociable events.

The main building and the barn including a caretaker's lodging were restored and reconstructed during two big construction stages from 1989 – 1992. Nowadays the farmstead houses a museum on local history and various exhibitions.

Registration for guided tours: Karin Schlote/ Phone: +49 5196 664



Über die Brücke 1 | 29649 Wietzendorf



Archaeological Museum Bad Fallingbostal

A museum with departments of prehistory, history and geology.

In addition to the presentation of the geology and palaeontology of the region, you will gain insights of the Palaeolithic, Mesolithic and Neolithic Age, the Bronze Age, the Iron Age up to the pre-industrial modern era. Special highlight: 'Fallingbostal's bride from Hungary'.

The bride was elaborately 'brought to life again' with her garments and jewellery. The displayed burial gifts show the far reaching trade links during the Bronze Age.

The megalith grounds in the Osterberg Park were established by the archaeological work group. Here you can see boulders that were carried by glaciers from Scandinavia to Germany. They are contemporary witnesses of the geological process that created our landscape.



Michelsenstraße 1 | 29683 Bad Fallingbostal
Phone: +49 5161 911530
info@aag-badfallingbostal.de



Heath Museum Rischmannshof

Located on the edge of Eckernworth you will find a group of old farmhouses. Eckernworth is the municipal forest of Walsrode and was already mentioned in the 16th century.



As early as 1911/12 the two-post smoke house, the Treppenspeicher (literally: staircase store) with a bee museum and a servants' house were moved to this site. Further features were added to the farmstead in the recent past: a beehive rack, a draw well, a farm garden and a cart shed. The special attraction is the bake house as the centrepiece of the annual baking days. The ground floor of the main building shows the traditional layout with the living room, the 'Flett' – an open kitchen with a fire place and the 'Diele' – the great central threshing floor- with the adjoining stables. The half-timbered barn houses an old forge from Walsrode where occasional demonstrations take place.

The open air museum's first outside section – a historic sheep pen - is situated in the middle of Krelinger Heath. The second outside section is a school museum in the old one-class village school in the village Klein Eilsdorf.

Hermann-Löns-Straße 8 | 29664 Walsrode

Phone: +49 5161 4810887

palme17@t-online.de | www.heidemuseum-walsrode.de



Harry's Sounding Museum

A journey through time in a friendly museum



In the gorgeous Aller-Leine Valley Harry's Sounding Museum displays one of the most wonderful collections of mechanical musical instruments. Get enchanted by this world! Visit a time long ago when keys produced sounds as if by magic and mechanical music came to life.

Masterpieces of mechanical music from the beginning around 1780 to its golden age in the middle of the 19th century up to 1920 are presented and performed in this private collection. About 70 exhibits are on display: from a little tobacco tin with a musical mechanism to big cylinder and disc music boxes up to an orchestrion. Many of these have been restored elaborately by the owner himself. Take this opportunity during your holiday and go on a little journey through time during a musical guided tour by the owner.

Open by appointment.

Neustädter Straße 25 | 29690 Schwarmstedt

Phone: +49 5071 912941



School Museum 'Old Village School' Bothmer

Visitors experience times long ago in the Old Village School Bothmer with its historic furniture and abundant exhibits.



School lessons took place in this one-class village school built in 1908 until it closed down in 1972. After having remained vacant for many years and a following elaborate reconstruction, it was re-opened as a school museum in 1995.

Let yourself be whisked away to imperial times by creaky old tables, wall maps, display boards, old satchels, slates and much more. The carefully reconstructed building brings back dim memories. And the younger generation discovers a completely different kind of education.

School lessons are bookable for groups.

Vor dem Felde 2 | 29690 Schwarmstedt

Phone: +49 5071 8688 | Fax: +49 5071 809251

touristinfo@aller-leine-tal.de | www.aller-leine-tal.de





Discover sacred art and buildings

Churches have always been very special places – much more than just buildings made of stone and wood.

Unlike museums they transmit a very unique mood to their visitors and welcome them to a moment of silence and reflection. In the Heidekreis you can discover churches from every era and in every style: half-timbered churches full of atmosphere, Gothic brick buildings and idyllic manor chapels; not to mention one of the six 'Heath Abbeys' which are inseparably associated with the Lüneburg Heath. Sacred places of incomparable diversity – welcome to the world of faith in the Lüneburg Heath!

Further information at
www.erlebniswelt-lueneburger-heide.de/en/churches-monastries





Schneverdingen

One-World Church Schneverdingen

The One-World Church in Schneverdingen came into being within a project for the world exhibition EXPO 2000.

Take some time and discover this very special church. Wood and glass were mainly used in the nail-laminated timber construction.

The architect Lothar Tabery used the innovative nail-laminated timber construction for the first time. Symbolic shapes like the circle (for eternity) and the square (for the cardinal points and elements) merge in the layout.

The altar in the church is absolutely extraordinary. The One-World Altar is a winged triptych and - with its wings open - resembles a cross. Books made of Perspex and filled with soil samples from all over the world find their place in the triptych. If one day the altar is completely filled, you will be able to look at 7,000 different Soil Books here.

Ernst-Dax-Straße 8 | 29640 Schneverdingen
Phone: +49 5193 4130
www.eine-welt-kirche.de



Peter and Paul Church

The Peter and Paul Church in Schneverdingen is a Lutheran church in the 'Heather Blossom Town'.

The Peter and Paul Church became the landmark of Schneverdingen as early as 1746. Take a tour of the church and discover its features. Look at the chalice and the bronze font from the 14th century and the remarkable pulpit altar from 1745.

Fieldstone churches are characteristic for the region. Initially Peter and Paul had a separate bell tower made of wood which was replaced by the current one in 1865.



Schneverdingen

Friedenstraße 3 | 29640 Schneverdingen
Phone: +49 5193 1249



St Bartholomäus Church

The name refers to one of 12 apostles who according to legend was also a missionary in India and died a martyr's death.

The parish originally belonged to the diocese of Verden and was first mentioned in records in 1407 when Walsrode Abbey sold fishing rights for the Wiedau (near Rotenburg). In the year 1567 the reformation took place. The present church was built in the neo-Gothic style in 1880 and is situated amidst old trees in the village centre.

On the altar there is a crucifixion group from the end of the 15th century. The bronze font is from the 14th century with a basin from 1682.



Neuenkirchen

Hauptstraße 6 | 29643 Neuenkirchen
Phone: +49 5195 1088 | Fax: +49 5195 7226
www.kirchengemeinde-neuenkirchen.de





Bispingen

Ole Kerk (Old Church)

Within Bispingen's old town centre you find the Ole Kerk, the oldest church in the old municipality of Soltau. The lovely little fieldstone church from the 14th century is open to visitors from Easter to Christmas.

The Ole Kerk was built in 1353 and is therefore the oldest church in the old municipality of Soltau. The builder was the bishop of Verden and he promised 40 days of indulgence to everyone who worked voluntarily on the building site. Because the region was poor, the church was built from fieldstones in a half-timber construction. Bricks were too expensive.

In the end the little church was the confirmand hall until it was renovated from top to bottom in 1973 and its original state was restored. Only the circumferential band of 16 stained glass windows reminding of water, baptism, the miraculous catch of fish or calming the storm are conceding to modern times.

The old bronze font (1406) and the baroque pulpit (1648) are now found in Bispingen's Gothic Revival church. The fieldstone church, the old vicarage and the parish centre form an impressive unit with the new vicarage and the old trees.

The Ole Kerk is open to the public. Just drop in and enjoy the silence and the unique atmosphere of this building.

Kirchweg | 29646 Bispingen
Phone: +49 5194 1238
KG.Bispingen@evlka.de



St Johannis Church

St Johannis Church is the oldest remaining church of Soltau.

It was first mentioned in records in 1464. The late-baroque hall church was completed in 1755 (medallion above the portal).

During Christmas night in 1906 this church completely burnt out. Afterwards it was reconstructed in the Gothic Revival style and dedicated in 1908.

In 1972/73 the interior of the church was redesigned. The pictures behind the altar on the south wall are a memorial for the soldiers from the parish of St Johannis in Soltau who were killed in action during the World War I.

Mounted on the outer wall you will find some remarkable pieces of art. The well preserved and historico-culturally significant gravestones made of sandstone date back to 1600 – 1850.



Soltau

Bahnhofstraße 11 | 29614 Soltau
Phone: +49 5191 2263
info@stjohannis.de | www.stjohannis.de



Church of the Holy Ghost Wolterdingen

The old Heath Church – a one-nave, Gothic brick building – is situated placidly in the middle of the village and was first mentioned in records from 1396.

The freestanding, wooden bell tower holds very old bells (the oldest from approx. 1350). About 1925 the nave was enlarged to the north by an extension in the late Art Nouveau style. From 1998 to 2001 the church was thoroughly renovated and restored. In doing so, remains of Gothic wall paintings were discovered.

This church has a crucifix (from before 1400!), altar figures and a bronze font from 1470. It is full of atmosphere and inspires meditation. The sacrament house is from the 15th century, everything else from the 19th century (pulpit) and from the 20th century.



Soltau

Wolterdinger Dorfstraße 2 | 29614 Soltau
Phone: +49 5191 927520
kg.wolterdingen@ewetel.net | www.kirche-wolterdingen.wir-e.de



Luther Church

The Luther Church was built in 1911 being the second Lutheran Church in Soltau.

Because of the establishment of industry and the connection by rail, the town population was rapidly increasing at the end of the 19th century and thus plans for a second Lutheran church were made.

The project was accelerated when the St Johannis Church burnt down at Christmas 1906 and was reconstructed without a second gallery (1907/08)

The architect Eduard Wendebourg decided to use bricks trimmed with white washed header bricks which was typical for the Gothic style.



Soltau

Birkenstraße 1 | 29614 Soltau

Phone: +49 5191 2263

info@lutherkirche-soltau.de | www.lutherkirche-soltau.wir-e.de



St Jakobi Wietzendorf

The name of the church in Wietzendorf refers to the biblical apostle James, son of Zebedee, who belonged to Jesus's inner circle.

The Gothic bronze font being an early work from the High Middle Ages and the Late Nazarene composition of the sanctuary are the highlights of the interior. The present church was built in Gothic Revival style in 1876. From the inside and the outside the church shows the features of a mature style: simplicity, balance and the preference of simple materials like bricks and timber.

The wooden church tower from 1545 holds three big bells. In 1957 the choir room was redesigned by the well-known church painter Rudolf Schäfer from Rotenburg. The former interior design was much plainer. The pulpit from 1876 impresses by its quality woodworks and the representative panel paintings.



Wietzendorf

Über der Brücke 1 | 29649 Wietzendorf

Phone: +49 5196 2190 | Fax: +49 5196 2275

verkehrsverein@wietzendorf.de | www.wietzendorf.de



St Urbani Church

St Urbani Church is the first completely preserved Gothic building in the region.

Approaching St Urbani Church situated on a vast lawn near the Örtze, the view of the unusual feature of two church towers strikes you. These towers have witnessed a changing church history of over 700 years.

The eye-catcher of particular value is the altar from the 15th century which is attributed to Volkmar Klovesten.

Outside the church there are some interesting wood sculptures by the artist Wladimir Rudolf from Munster from 1995-2003. One of them depicts the church patron St Urban.



Munster

Kirchgarten 12 | 29633 Munster

Phone: +49 5192 2321

kg.urhani.munster@evlk.de



Sheep Pen Church St Martin Munster

On the 9th April 1989 an old sheep pen from Kohlenbissen was dedicated as a church building. Wooden beams incised with verses of the psalm 23 'The Lord is my Shepherd', elaborate nativity figurines by the artist Josef Brugger from East Tyrol and a large window as altarpiece allowing a view of green lawn and trees invite you to relax and meditate. One of the three benches with the title 'So that strangers become friends' was installed by the artist Wladimir Rudolf in the year 2016. The Sheep Pen Church St Martin is surrounded by typical Heath scenery at the edge of the Heidberg forest. It is open every day during the summer months and being a 'cycling track church', it is ideal as a stopover for bicycle tourists.



Munster



Marienburger Straße 1 | 29633 Munster

Phone: +49 5192 5757

kg.munster@evlka.de | www.kirchengemeinde-munster.de





Wense

The Chapel in Wense

The chapel belongs to the Wense Estate in a picturesque setting between Dorfmark and Soltau.

The chapel in Wense was the first church in the region that was constructed and dedicated as the tomb and estate chapel for the von der Wense family after the Thirty Years' War. It was built at the same time as the manor house. It replaced the parish church in Dorfmark as burial place for the von der Wense family.

The chapel has been preserved over the centuries and is still family-owned. When the chapel was restructured and restored, a new bell tower was put on the west gable above the entrance portal and has been the main feature ever since. The interior is particularly remarkable because of its early baroque decor. The sanctuary is higher than the nave and separated by a wooden balustrade showing rich carvings. The family crypt lies beneath the sanctuary.

The altar from 1674 is richly structured with framing pillars and shows paintings of the Last Supper, the Crucifixion and the Resurrection. The pulpit dating back to 1673 is situated on the side in front of the sanctuary.

Forstweg | 29683 Gemeindefreier Bezirk Osterheide-Wense
Phone: +49 5163 6920



St Martin's Church Dorfmark

The present church was erected on the remaining foundation walls from the 14th century.

The church is an unpretentious hall full of atmosphere. A glance at the altar, the pulpit and the font points up that they are much older than the church itself.

As the wooden bell tower from 1519 is accessible, you can have a look at it from the inside. The oldest of the three bells is from 1765, the other two date back to the World War I.

From the outside the church impresses by the fieldstone structure and the historic grave stones while the inside comes up with an unpretentious hall where a glance at the Gothic altar, pulpit and font shows that these are much older than the church building.

Hauptstraße 12 | 29683 Bad Fallingbostel
Phone: +49 5163 329
kg.dorfmark@evlk.de



Dorfmark

Stellichte Church

The Lutheran church in Stellichte is a rare and well-preserved example of an estate chapel, homogenous in architecture and decor, from the early 17th century. It was built from 1608 – 1610 on behalf of the Behr family.

An ornamented sandstone portal with statues of St Peter and Paul inserted in side niches was attached to the apparently simple brick building. Because of the plain exterior, visitors are surprised by the splendour inside with its elaborately carved and painted wood furnishings including the rich altarpiece with remarkable paintings, the octagonal wooden font pedestal, the patronage pews in the choir room, the wooden choir screens with the large central ogee arch and the pulpit. On the west gallery we find the organ built by organ builder Marten de Mare in a beautifully decorated case.

For guided tours and groups, please register at: Phone +49 51680 309.

Stellichte | 29664 Walsrode
Phone: +49 5168 309
www.kirchenkreis-walsrode.de



Walsrode



Walsrode



Walsrode Abbey

In the middle of the vivid little town of Walsrode in the Heath, there is a large area surrounded by a brick wall.

Visitors enter by the wrought iron gate and are surprised by the silence and vastness that surround them just next to the noisy main road. The well-maintained premises from the 18th century convey a special atmosphere: peace and a feeling of security in the middle of the town. A place of reflection in a region that chiefly offers visitors entertainment and amusement.

Traces from the Middle Ages can be found at the abbey chapel. The stained glass windows behind the altar are from 1483 and have survived all the centuries without damage. The Holy Child carved from wood is also over 500 years old. His garment was decorated with freshwater pearls from the rivers in the Heath by the nuns in the 17th century. After having seen the painting of the Last Supper, the reliquary and the abbess's chair, the visitor's attention is drawn to a clock face that always shows 'Five to Twelve'.

Every afternoon from April to October the ladies of the convent take visitors on guided tours around the abbey and tell them about the eventful history of the abbey founded over 1,000 years ago. Nowadays visitors will see a plain but harmonious baroque complex with buildings mainly from the time between 1720 and 1780.

Kirchplatz 2 | 29664 Walsrode
Phone: +49 5161 4859380 | Fax: +49 5161 4858389
info@kloster-walsrode.de | www.kloster-walsrode.de



St George Church in Meinerdingen

A nobleman had been looking for a suitable milieu for his daughter and found it in Walsrode Abbey. Full of joy he donated an unusual gift to the Abbey – the Meinerdingen Church.



Walsrode

A little, unspectacular church situated about 3 km east of the Abbey. The deed of donation from 1269 is the oldest evidence of the church. In the 14th century the church was completely destroyed and rebuilt in Gothic style.

At the beginning of the 16th century the tower was added and so were the vestry and the porch at the end of the 19th century. During the 30 Years' War the church was plundered: Swedish soldiers took one of the bells and much more. But after the war there was apparently a short heyday: donors re-equipped the church and the parson widows' house was built (1649).

The church is named after St George. His picture adorns the oldest bell and the church seal.

Dorfallee 16 | 29664 Walsrode
Phone: +49 5161 8790
www.kirchenkreis-walsrode.de



Church Kirchwahlingen

One of the region's oldest churches whose huge, grey fieldstone tower is visible from afar. It is really worthwhile visiting this very old church and its treasures.



Rethem

According to a chronicle written by the local parson in 1901, Count Walo, the founder of Walsrode Abbey, is said to have likewise founded the church in Kirchwahlingen. The church seal of Kirchwahlingen carries the inscription 'From Walo in honour of the Holy Cross' (translation). A curiosity of the church in Kirchwahlingen is the so-called hagioscope in the east wall – unique in this region. Some churches in the Middle Ages built an opening in the wall to allow people who were excluded from the service a view of the altar from the outside.

Kirchplatz 2 | 27336 Rethem
Phone: +49 5165 913001



Staging Nature

Landscape parks are places where nature is elaborately staged. In the Adventure World Lüneburg Heath you will find a whole range of scenic attractions that have been designed under the rules of horticulture and landscaping architecture. Sometimes full of oddities, sometimes very romantic with ponds, old trees and rhododendron groves. One of Germany's oldest open-air-museums, beautifully designed farmsteads with farm gardens, scenic pond habitats and heather gardens, a typical Area of Outstanding Natural Beauty with heather areas, birch trees, juniper and bee hives. Nature, scenery and culture perfectly combined!

Further information at
www.erlebniswelt-lueneburger-heide.de/en/landscape-parks





Schneverdingen

Heidegarten in Schneverdingen

You will find the Heather Garden at the entrance of Höpen, directly in front of an old sheep pen. In this garden, which is unique in Germany, you can admire the diversity of different heather species. The Heather Garden was accomplished in 1990 and has grown ever since.

Meanwhile there are 150,000 plants of 180 different species of heather to be seen here.

The circular flower bed can be seen best from a bird's eye view. Climb the viewing tower and marvel at the main bed. You will be surprised about the accuracy of the heather display.

Guided tours in Höpen

From April to October there is the opportunity to take part in a guided tour around Höpen and the Heather Garden. Join our guides on an approximately two-hour tour and learn interesting and useful facts about the Heath and its history, about Nature Reserves and AONBs and much more.

Overbeckstraße 57 | 29640 Schneverdingen



AONB Höpen

North of the Heath Town of Schneverdingen there is Höpen, an Area of Outstanding Natural Beauty where you can find all the characteristic features of the Lüneburg Heath: Beautiful heather areas, birch trees, juniper and bee hives.

Follow the trails; discover the scenery on foot, by bike or by carriage and meet the shepherd with his flock of Heidschnucken. Enjoy the distant view to Wilseder Berg from Schneverdingen's highest elevation, Höpenberg with 119 m ASL, and stride down the slope to the open-air stage in the Höpen Valley to the Heather Blossom Festival.

A small hint: The sheep pen near the road L171 is the home of shepherd Günther Beuße's flock of Heidschnucken. Watch the driving out and driving home of the flock at approx. 10:30 a.m. and between 5 and 6 p.m. from Easter to October.

Overbeckstraße 57 | 29640 Schneverdingen
touristik@schneverdingen.de



Schneverdingen

Halifax

Apart from Breidings Garden the Rödgers family from Soltau created 'Rödgers Park at the Halifax', another landscape park in close proximity to the town..

This scenic park from the 19th century with two art nouveau villas and three lakes surrounded by old trees is located in the lowlands of the River Böhme.

In wintertime this park used to be a popular spot for young people to go ice skating with the former skating club 'Halifax'. There are pleasant trails to explore the park and the surrounding Böhme Forest. The 'Halifax' lies exactly on the 53rd latitude - just like the Canadian City of the same name.



Soltau



Am Halifax | 29614 Soltau
Phone: +49 5191 828282
www.soltau-touristik.de





Soltau

Breidings Garden

Breidings Garden is far more than a park.

The 'Large Garden' of about 10 hectares is located only a few hundred metres from Soltau's town centre. The Rödgers family began to create this garden in 1850 and experts believe its diversity to be unique. Swamps and ornamental ponds, orchards and huge rhododendrons as well as a stately garden villa and artificial ruins can be found in the park.

The Rödgers Family from Soltau had built a world-wide business empire and at times had more than 10,000 employees all over the world. In summertime there were big family gatherings to have a good time together and to make important decisions. Nowadays numerous cultural events take place on the premises

Guided tours on every other Sunday in the month from March to October. In winter upon request.

Breidings Garten | 29614 Soltau
roeders-arnold@t-online.de | www.breidings-garten.de



Eckernworth

This woodland is also called the 'Green Lung' of the town. It was already mentioned by Dr. Johann Mellinger, court physician in Celle, in a register from about 1600.

This local recreation area with 300-year old oaks and beech trees, hiking trails and playgrounds, rest areas, ponds and a flock of Heidschnucken is a popular attraction. For Hermann Löns the Eckernworth ranked among the places of particular interest. In the newspaper 'Hannoverscher Anzeiger' Löns described his stay in Walsrode as follows:

"The next morning after breakfast my first stroll took me to the praised and widely-known 'Eckernworth', Walsrode's wonderful municipal forest in close proximity to my hotel at Verdener Chaussee. The hilly landscape stretches along the Fulde meadows. Well-maintained trails and a spacious inn make it a popular destination for summer guests from Bremen and Hannover. The marksmen's club house and a Jahn monument interrupt the beautiful woodland and several bubbling springs – one of them ascending like a fountain - invigorate the spectacular mixed forest."

Herrmann-Löns-Straße 19 | 29664 Walsrode
www.vogelpark-region.de



Walsrode

Villa Klee - Hill Garden Ahlden

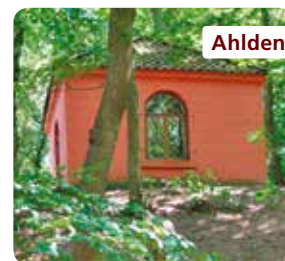
The Klee family from Hamburg had this stately villa built as their summer retreat.

At the beginning of the 19th century bourgeois families who had gained wealth started to create lavish parks in spectacular settings like in Ahlden at the River Alte Leine. In accordance to the demands, emphasis was put on deciduous shrubs and plants.

As in most gardens of that time the Hill Garden was supposed to look as natural as possible. Strict flower beds were broken up, paths and sightlines appear as if 'at random'.

The Hill Garden owes its name to a natural dune ridge and provides spectacular views of the scenery. Special highlight: A teahouse in the park served as a romantic destination for little carriage rides or promenades of the family and their guests.

Berggarten Ahlden | 29693 Ahlden



Ahlden



Londy Park with the 'Burghof Rethem'

The 'Burghof Rethem' is situated in Londy Park close to the banks of the River Aller. The Aller and the Aller crossing in Rethem had already been of great importance in the Middle Ages.

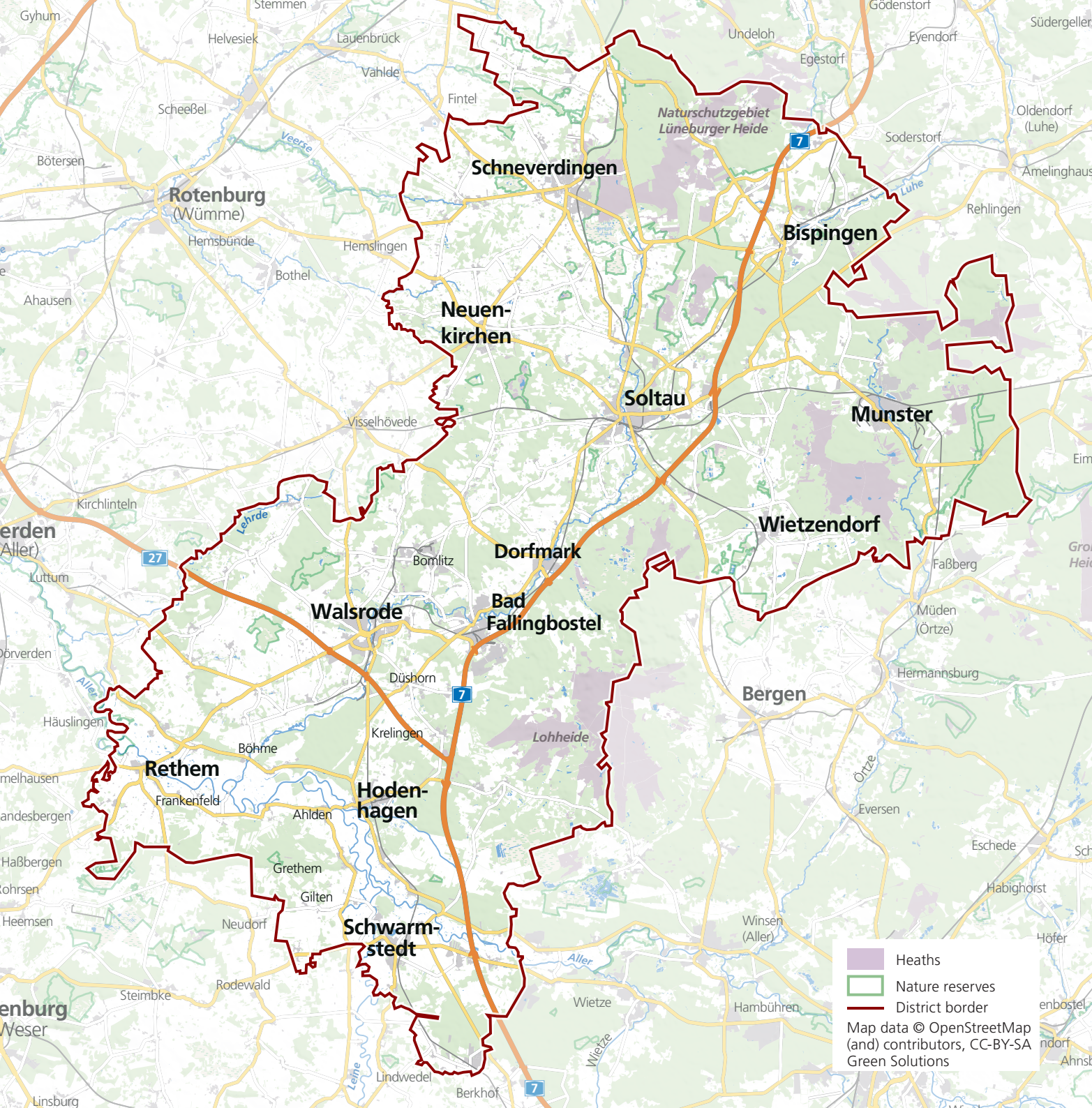
For this reason there was a castle in close proximity to the Aller bridge. Medieval remains of the walls of that stately manor can be seen in a small exhibition in the so-called courtyard. These visible embedded witnesses of the past give the courtyard that certain flair. The so-called 'Amtsschreiberhaus' (scrivener's house) and the town hall - still in use today - are also historic parts of the formerly large complex. According to the importance of the castle, the 'Burghof' is nowadays a cultural centre. Exhibitions and events of all kinds take place here. The sculpture park Rethem was officially opened in 2006. Several sculptures by the sculptor and architect Norbert Thoss from Hoya are still part of Londy Park.

The building contractor Cristoph Londy bestowed Londy Park overlooking the Aller on the townspeople "for strolls as well as for staging public amusement". The park is designed as a garden and was given a so-called post mill from the 16th century for Rethem's 600-year anniversary. This technically exciting building was relocated from Frankenfeld to wall Londy Park.

Guided tours for visitors are offered regularly.

Lange Straße 2 | 27336 Rethem (Aller)
touristinfo@aller-leine-tal.de







Ordering brochures



List of Accommodation
2019



Horse Riding



Bike Map (4,95 €)



Water
Experience



Cycle Tours &
Camping in the
Adventure World
Lüneburg Heath



My Heidekreis –
Tips for recreation

and much more

We'll be happy to send you the requested brochures free of charge.

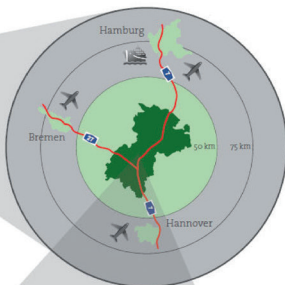
You'll find our contact details on the back page.

Ordering brochures on the Internet:

**[www.erlebniswelt-lueneburger-heide.de/en/
service/brochure-orders/](http://www.erlebniswelt-lueneburger-heide.de/en/service/brochure-orders/)**

Heidekreis

Mitten in Niedersachsen – mitten im Leben.



Am Alten Stadtgraben 3 | 29614 Soltau
Phone: +49 5191 6233314 | Fax: +49 (0) 5191 6233315
info@erlebniswelt-lueneburger-heide.de/en/
www.erlebniswelt-lueneburger-heide.de/en/



ERLEBNISWELT HEIDEKREIS